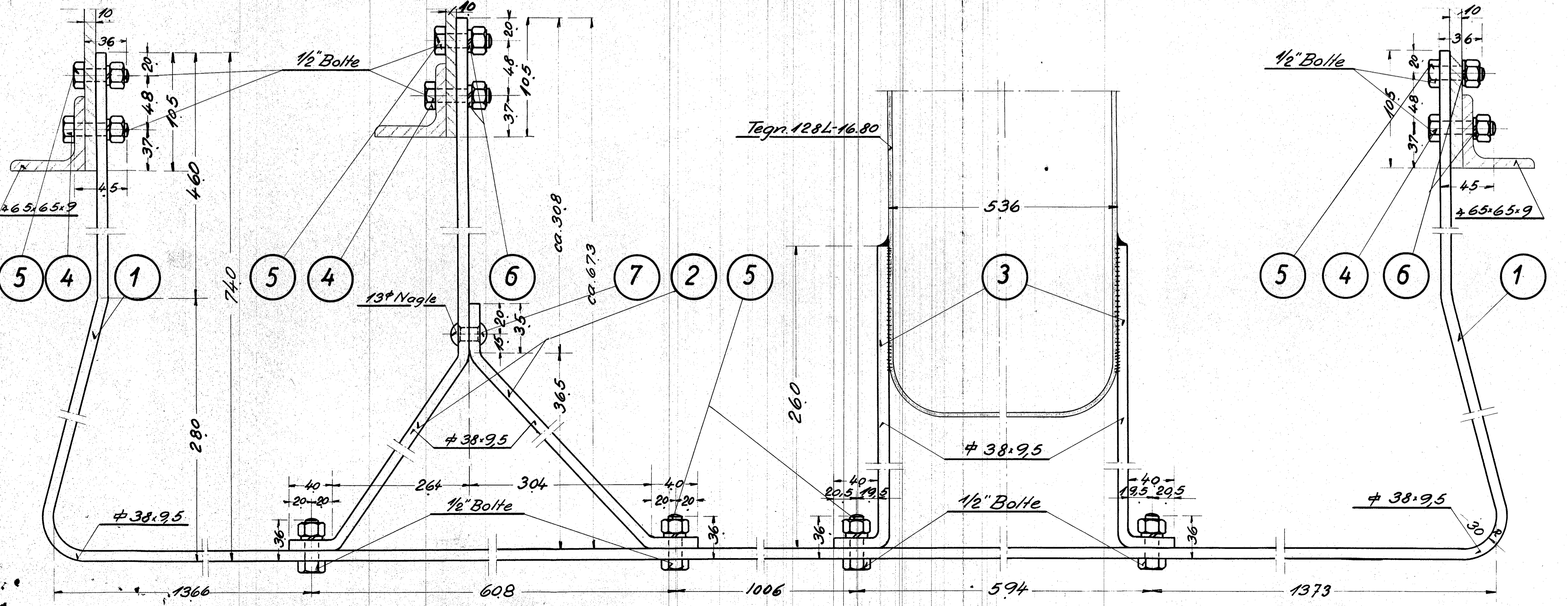
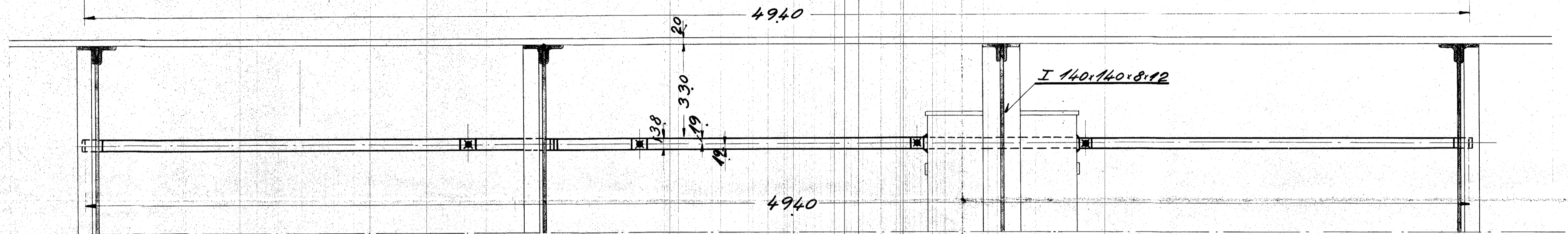
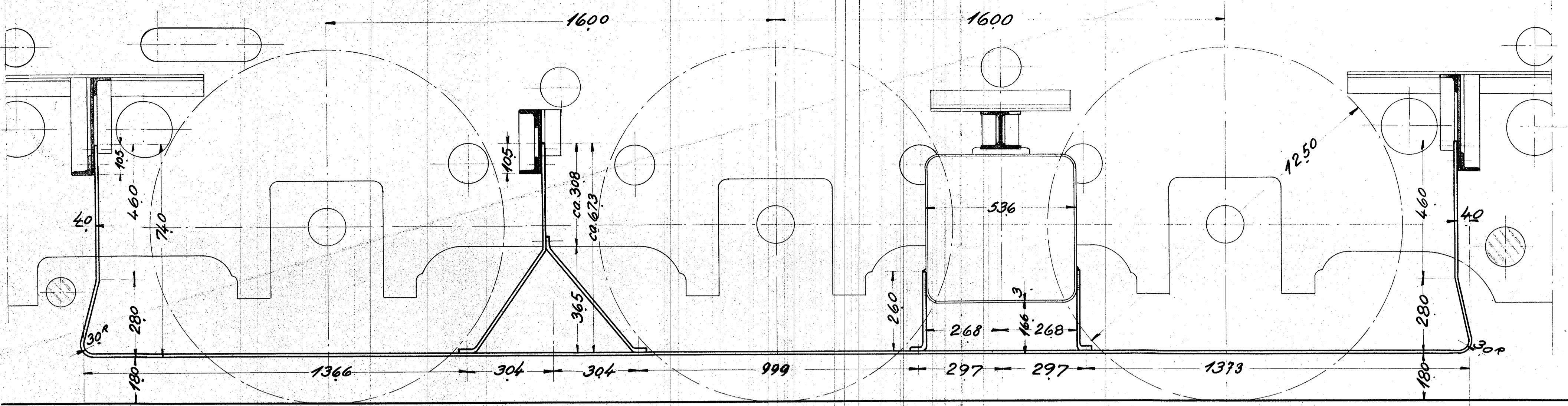


|          |    |  |                                |
|----------|----|--|--------------------------------|
| NO 55187 |    |  |                                |
| 1        | 2  | Fangbøjle  | Flussj $\phi 38.95 \cdot 6400$ |
| 2        | 2  | Understøtning                                    | " $\phi$ " " 3000              |
| 3        | 4  | do.  | " $\phi$ " " 1250              |
| 4        | 6  | 6kt. Bolt m. Møtrik. $\frac{1}{2}$ " $\cdot$ 4.5 | " Magasin.                     |
| 5        | 14 | do " " $\frac{1}{2}$ " $\cdot$ 3.6               | " "                            |
| 6        | 20 | Fjederskive $\frac{1}{2}$ "                      | Staa "                         |
| 7        | 2  | Nagle $13^\circ$ $\cdot$ 40                      | Nittej "                       |



H. RICHTS AARHUS  
**Fangbøjle for Bremsetraverser**  
 Diesel-el-410HK. Motorloko.  
 Erik Jensen  
 13-1-1934 1:10  
 1:25 **128 L-22.41.**  
 S. M.